



Manufacturers of High-Quality Farm Machinery

# Hi-Spec Side Spreader



## Parts Catalogue

**Models:**

**800, 1000**

*rev – ss102*



### Hi-Spec Engineering Ltd.

Station Rd, Bagenalstown, Co. Carlow

**Tel:** +353 (0) 59-9721929 / 9721992

**Fax:** +353 (0) 59-9721980

**Website:** [www.hispec.net](http://www.hispec.net)



---

## Introduction

### **When ordering parts:**

- Quote Machine Serial Number and Model.
- Quote the complete Part Number and Description.
- State the means by which you require delivery, whether by C.O.D post or delivery through our dealer network.
- Where reference is made to Left and Right, this should be understood to mean left or right when the machine is viewed from the rear.

### **Safety First:**

Use only genuine Hi-Spec spare parts for this machine. Use of spare parts not supplied or recommended by Hi-Spec could result in injury to the operator or damage to the machine, and invalidate the warranty.

### **NOTE:**

- The illustrations in this book are for identification purposes only.
- Hi-Spec Engineering reserves the right to make changes or improvements at any time without incurring any obligation to make such changes on products sold previously.



---

## Contents

Introduction.....	2
Contents .....	3
Layout .....	4
External Parts & Fittings .....	5
Drive System.....	7
Rotor Layout.....	8
Axles.....	10
PTO Shaft .....	12
Tyres & Wheels.....	14
Decals .....	15
Sales and Service .....	17
Notes .....	18








## Layout



Ref.	Description	page
1	Rotor	8
2	Back Cover Section	6
3	Hose Carrier	5
4	Safety Guard	5
5	Lid	5
6	Hydraulic Ram	5
7	Wheels	14
8	Drive System	7



## External Parts & Fittings

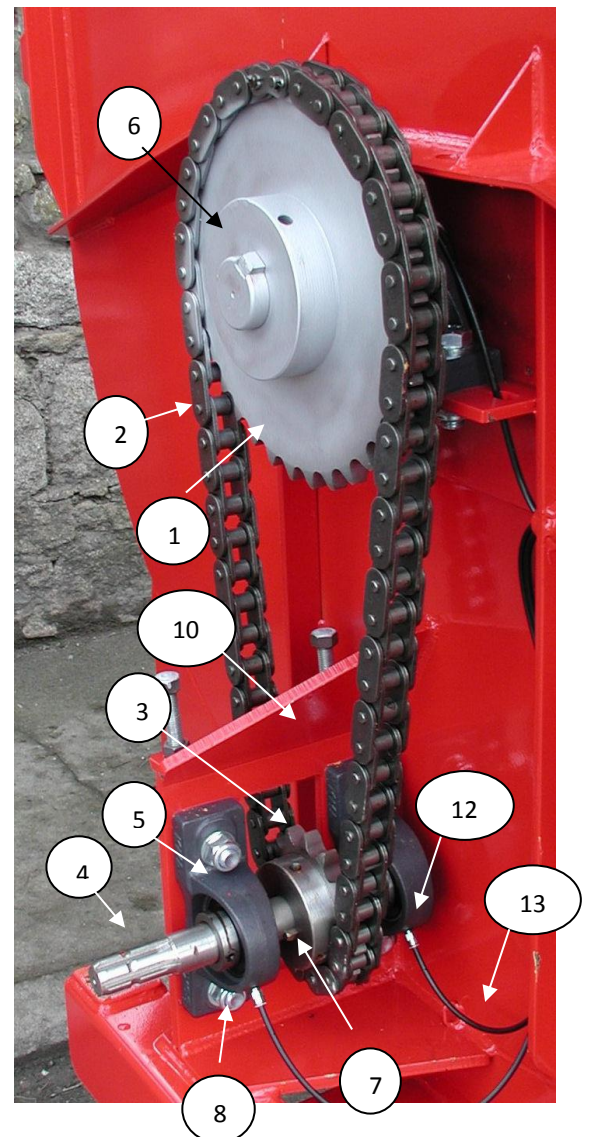
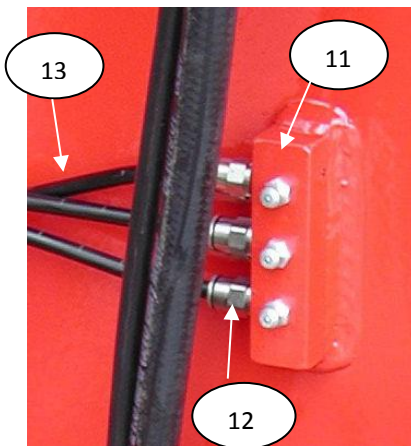
Ref.	Part No.	Description	
1	MM_8511	Hose carrier	
2	SS_301 SS/3010	Safety guard for 800 Safety Guard for 1000	
3	SS_270	600 Lid	
4	SS_270	800 Lid	
5	SS_272	1000 Lid	
6	SS_351	Hydraulic ram for Lid	
7	MM_H001 MM_H002	Hydraulic hoses 3/8" straight – 90 19' 20.5'	
8	GP_2002	1/2" Male hydraulic fitting	
9	GP_2000	1/2" Brake hydraulic fitting	
10	MM/3605	Handbrake assembly - zinc	

<p>11</p>	<p>MM_1251 MM_1252</p>	<p>Mud Flaps 4 hole – short 4 hole – long</p>	
<p>12</p>	<p>GP_001</p>	<p>Rear lights (single)</p>	
<p>13</p>	<p>GP_3503</p>	<p>7 pin plug</p>	
<p>14</p>	<p>GP_3505</p>	<p>Junction box (lights)</p>	
<p>15</p>	<p>P23</p>	<p>Back cover section</p>	
<p>16</p>	<p>SS/305</p>	<p>Rotor bearing cover</p>	
<p>17</p>	<p>VT/203</p>	<p>PTO Stand</p>	
<p>18</p>	<p>VT/207 VT/008</p>	<p>Drawbar stand Drawbar pin</p>	
<p>19</p>	<p>VT/1101 MM/9207</p>	<p>12" Straight Hitch Cranked Hitch</p>	



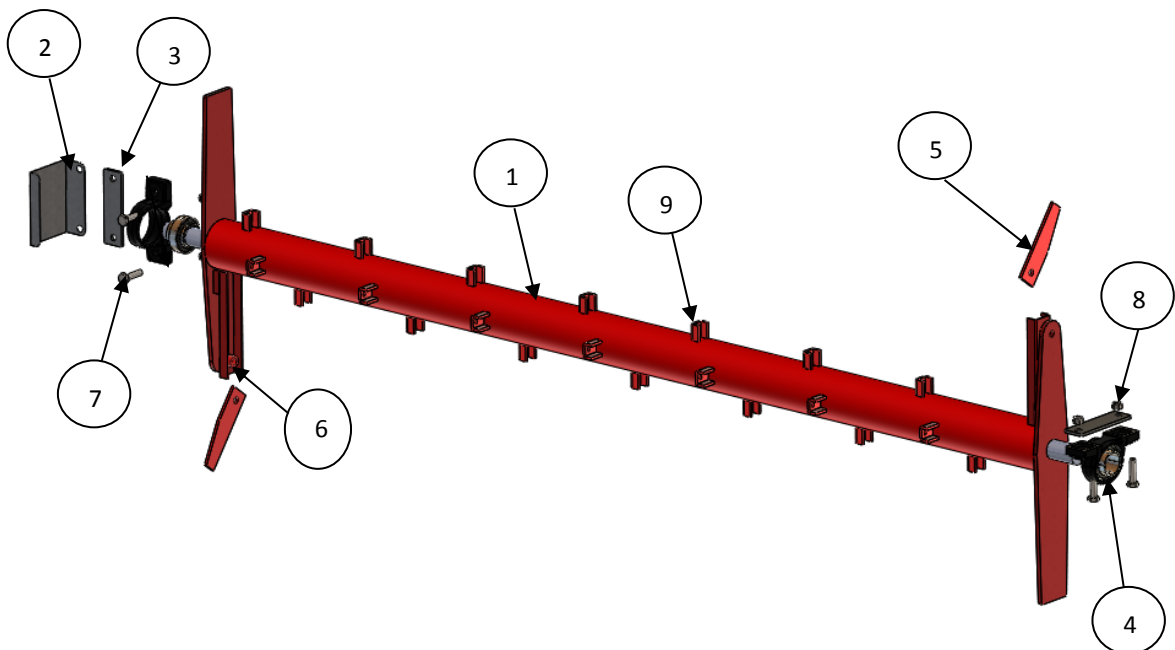
## Drive System

Ref.	Part No.	Description
1	SS_806	33T ASA100 sprocket
2	SS_1101	ASA100 62 link chain
	SS_1101	ASA100 56 link chain
	SS_101	ASA100 connecting link
	GP_30110	ASA100H connecting link
3	SS_804	14T ASA100 sprocket
	SS_804	12T ASA100 sprocket
4	SS_7701	6 spline input shaft
5	SS_0501	Complete bearing
6		Key steel (18x12mm)
7	KY_1010	Key steel (10x10mm)
8	GP_1055	M20x70mm bolt
9	GP_1100	M20 nut
10	SS_0802	Tension bracket
11	VT_705	Grease nipple
12	MM_M85T	Grease hose connector
13	MM-M6GFT	Hose pipe

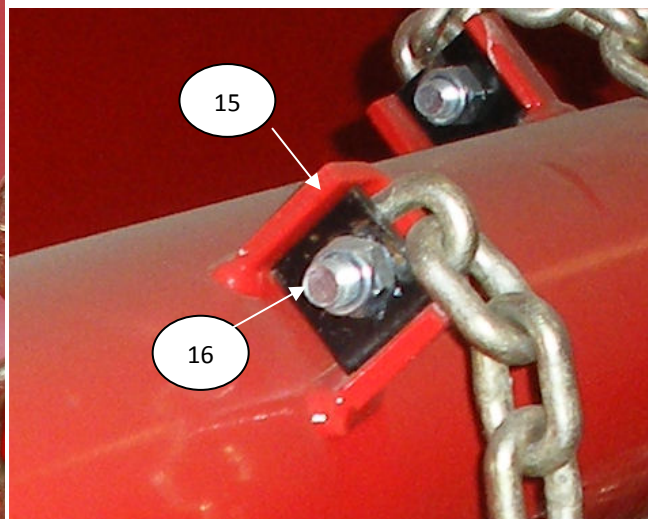
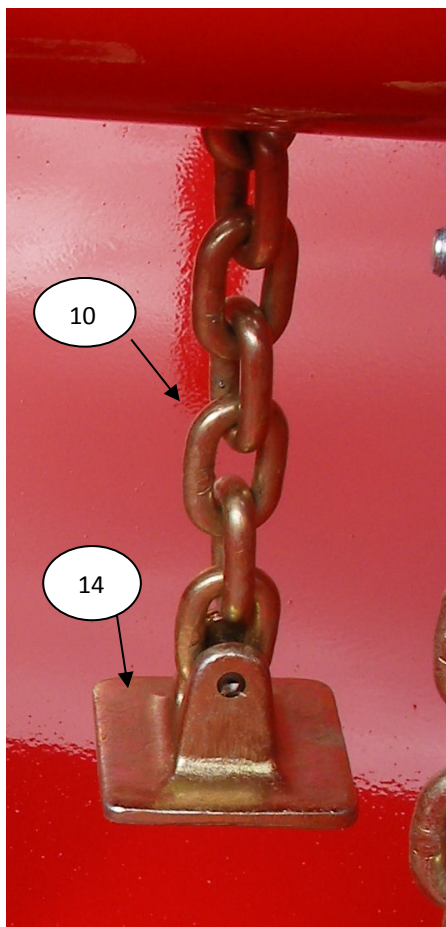
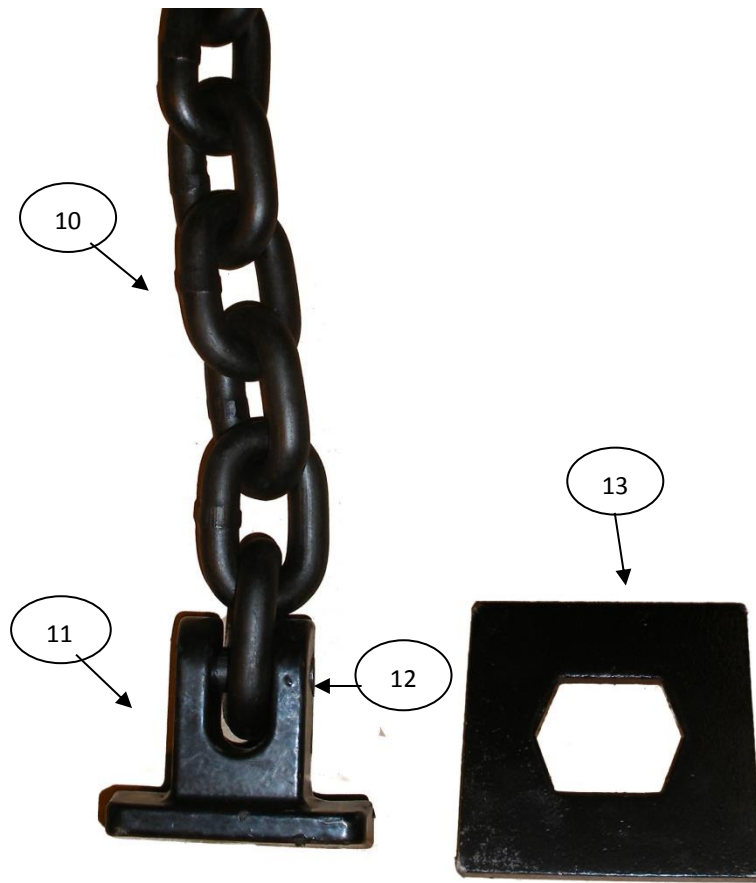


## Rotor Layout

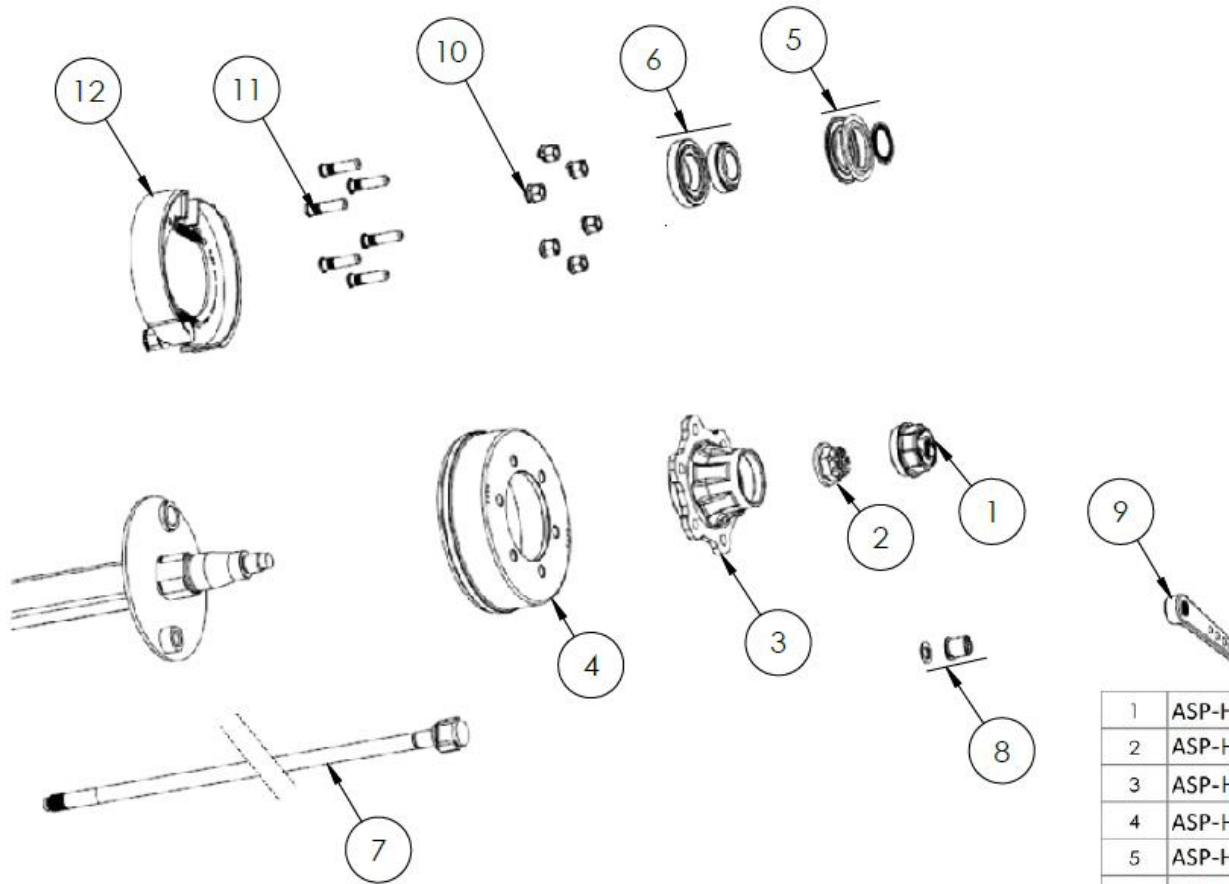
Ref.	Part No.	Description
1	MM_7000	Rotor Shaft
2	SS_305	Bearing guard
3	SS_0810	Rear bearing flat
4	SS_055	Complete bearing
5	SS_281	Starting end flail
6	SS_280	Pin for end flail
7	GP_1056	M20x80mm bolt
8	GP_1100	M20 nut
9	SS_287	Weld on chain holder
10	SS_286	13 link chain and head
	SS_285	15 link chain and head
	SS_2851	17 link chain and head
11	SS_282	Flail head end
12	SS_284	Roll pin
13	SS_283	Flail plate, 4"x4"
14		Heavy duty forged flail head
15	SS/700	Square washer
16		Nut bolt







## Axles

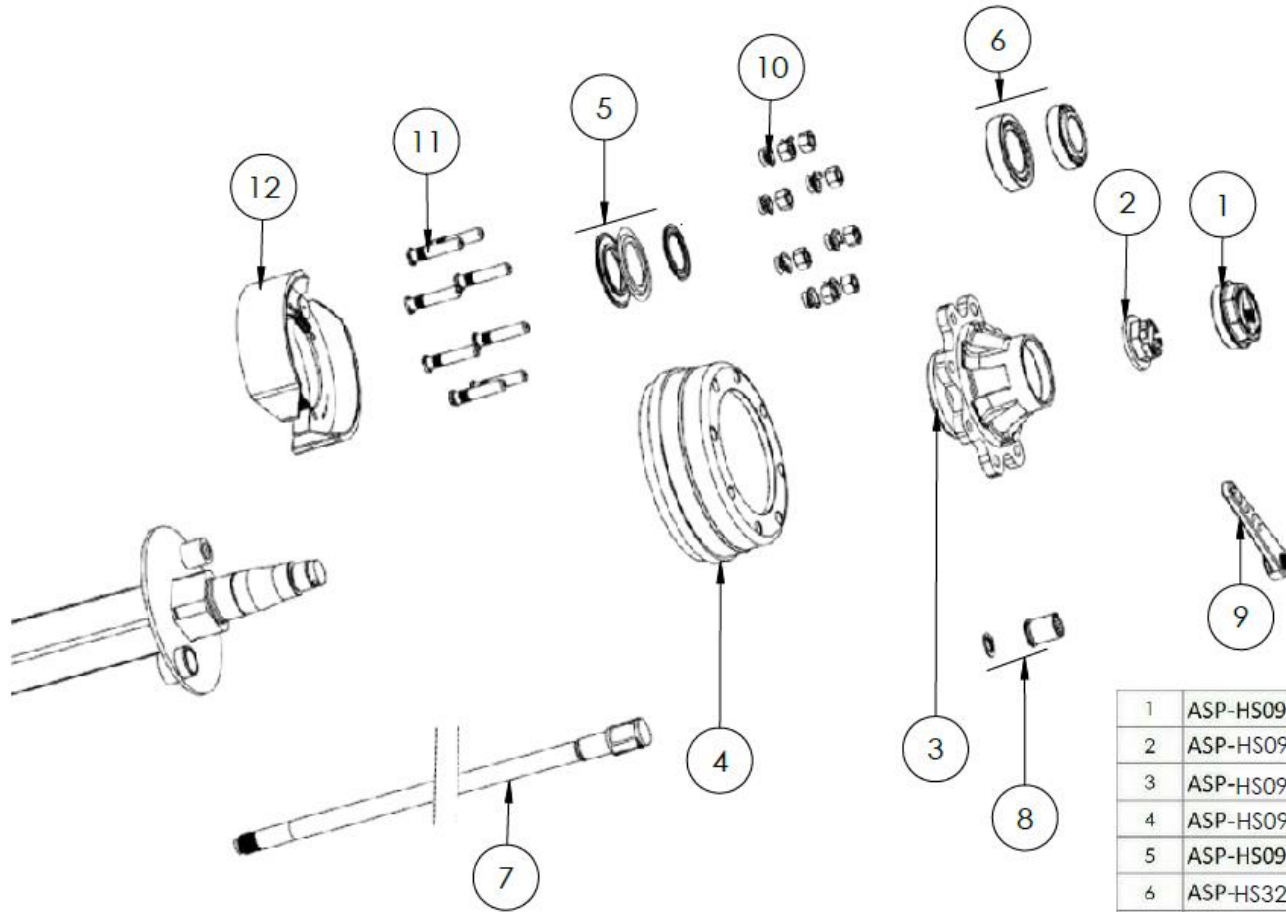


**Due to the large range of axles we use, when ordering parts please state:**

- Model of machine
- Tyre size
- Axle manufacturer (written on hub cap)

1	ASP-HS07D3001-06	Hub Cap	2
2	ASP-HS07D3001-08-AK	Castle Nut & Split Pin Kit	2
3	ASP-HS07D3001-02-2	Wheel Hub	2
4	ASP-HS07D3001-02-1	Brake Drum (Ø300*60)	2
5	ASP-HS07D3001-03-AK	Seal Replacement Kit	2
6	ASP-HS33210-33213-AK	Bearing Kit	2
7	ASP-HS08D3012-12-1	Camshaft (Z-type) ( 479mm)	1
7	ASP-HS08D3012-12-1	Camshaft (S-type) ( 479mm)	1
8	ASP-HS09D1-12-AK	Camshaft Repair Kit	2
9	ASP-HS07D3001-12-5	Brake Lever	1
10	ASP-HSM18WNC	Wheel Nut & Conical Washer Kit	2
11	ASP-HSM18SWSS-077	Wheel Stud Kit	2
12	ASP-HS07D3007-11	Brake Shoe Kit (Ø300*60)	2

1000 Spreader

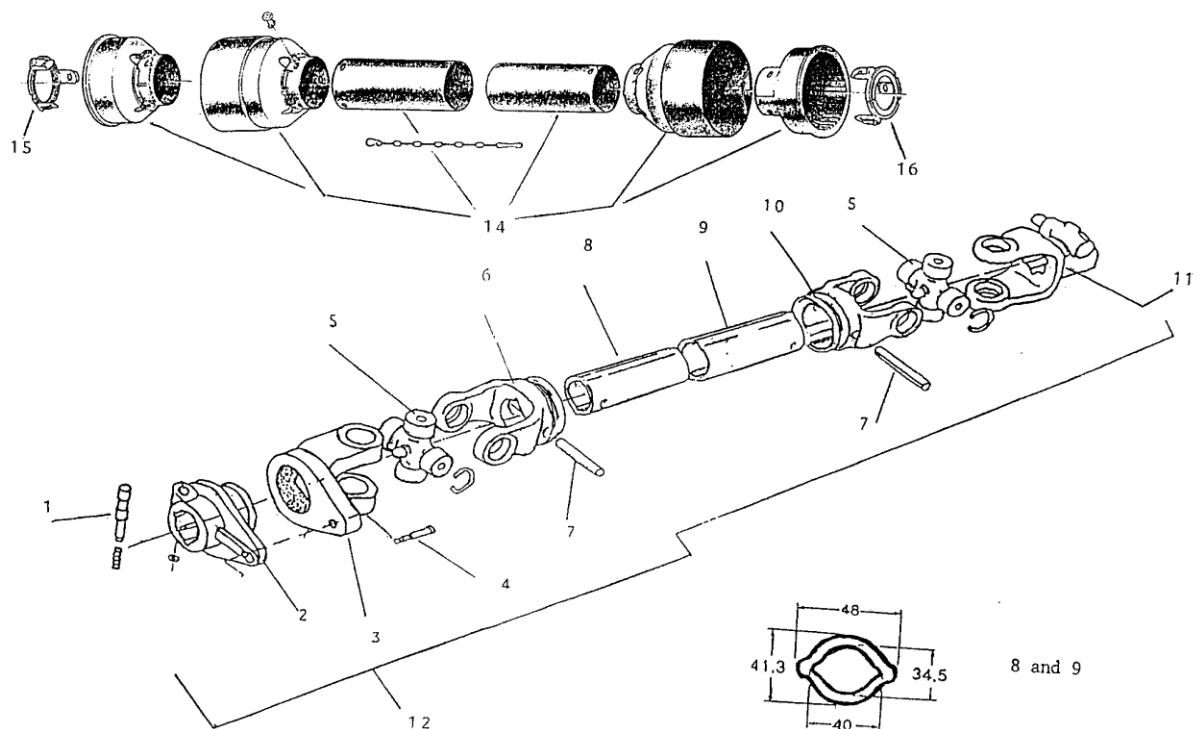


1	ASP-HS09D1-06	Hub Cap	2
2	ASP-HS09D1-08-AK	Castle Nut & Split Pin Kit	2
3	ASP-HS09D1-02-2	Wheel Hub	2
4	ASP-HS09D1-02-1	Brake Drum (Ø300x90)	2
5	ASP-HS09D1-03-AK	Seal Replacement Kit	2
6	ASP-HS32212-32215-AK	Bearing Kit	2
7	ASP-HS09D1002-12-1	Camshaft (Z-type) ( 461.5mm)	1
7	ASP-HS09D1002-14-1	Camshaft (S-type) ( 1291.5mm)	1
8	ASP-HS09D1-12-AK	Camshaft Repair Kit	2
9	ASP-HS09D1-12-5	Slack Adjuster	1
10	ASP-HSM20WNC	Wheel Nut & Conical Washer Kit	2
11	ASP-HSM20SWST-099	Wheel Stud Kit	2
12	ASP-HS309BKH	Brake Shoe Kit (Ø300x90)	2

## PTO Shaft

Ref.	Part No.	Description
	VT_4444	Complete PTO shaft
1	MM_605	Push pin
2	MM_380	Shearpin hub (splined)
3	MM_930	Shearpin yoke hub
4	MM_071	Shearbolt
	MM_073	Shearbolt
5	MM_931	Cross piece c/w cups
6	MM_933	Inner yoke
7	MM_606	Roll pin
8	MM_816	Tube (male section)
9	MM_817	Tube (female section)
10	MM_932	Outer yoke
11	MM_935	End yoke
12	MM_1111	Complete PTO shaft
13	MM_2222	Complete PTO shaft
14	MM_1112	Cover for PTO shaft
	MM_2223	
15		Retaining collar
16		Retaining collar

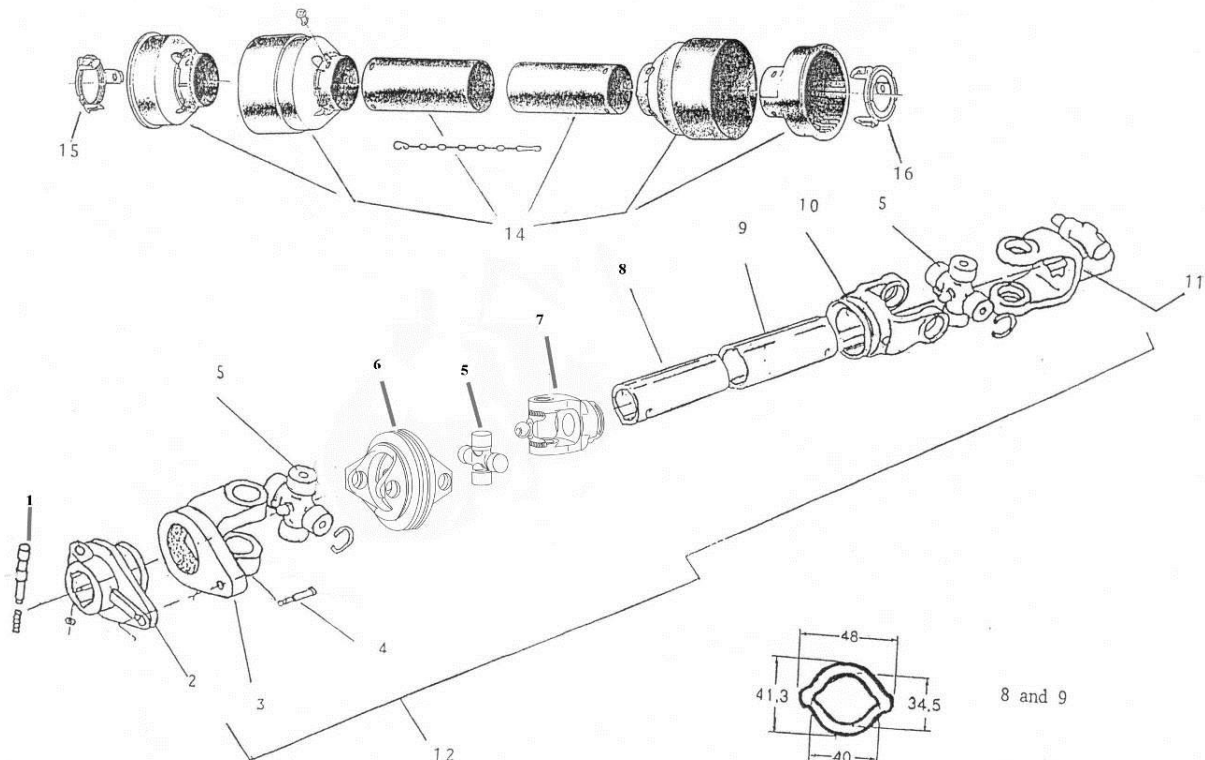
NOTE: only use shearbolts supplied by Hi-Spec



## PTO Shaft (wide angle)

Ref.	Part No.	Description
1	MM_605	Push pin
2	MM_380	Splined shearpin hub
3	GP_2200	Push pin yoke end
4	GP_1255	Shearbolt 10.9 $\varnothing$ 8x50mm
	GP_1256	Shearbolt 10.9 $\varnothing$ 8x60mm
5	GP_2201	Cross piece c/w cups
6	GP_2202	Wide angle double joint
7	GP_2203	Wide angle yoke end
8	MM_1917	Tube male section
9	MM_1918	Tube female section
10	MM_932	Outer yoke
11	MM_935	End yoke
12	PT_7502	Complete wide angle PTO shaft
13	PT_7502C	Wide angle covers (end)
14	PT_7503	Wide angle cover (shaft)

NOTE: only use shearbolts supplied by Hi-Spec





## Tyres & Wheels





			
Wheel size	15.5 x 22.5	Wheel size	600/50 – 22.5
Tyre Only		Tyre Only	WHL/20
Wheel Assembly	WHL/00182	Wheel Assembly	WHL/0034 (8 stud) WHL/0030 (10 stud)
			
Wheel size	550/60 – 22.5	Wheel size	21.3 x 24
Tyre Only		Tyre Only	GP/5009
Wheel Assembly	WHL/0012 (8 stud) WHL/013 (10 stud)	Wheel Assembly	WHL/023 (8 stud) WHL/022 (10 stud)

If the size of wheel you require is not listed, please give the required size to the stores



## Decals

Ref.	Part No.	Description
1	ST/0028	
2	ST/0018	
3	ST/0043	
4	ST/0021	
5	ST/0040	
6	ST/001 Large Hi-Spec ST/002 Small Hi-Spec	

<p>4 ST/0002</p>	
<p>7 ST/0003</p>	
<p>8 Complete Set – 800</p>	
<p>9 Complete Set – 1000</p>	
<p>10</p>	
<p>11</p>	

---

## Sales and Service

### Ireland

#### Head office

Hi-Spec Engineering Ltd., Station Rd, Bagenalstown, Co. Carlow, Ireland

Tel: - +353 59 9721929 Fax: - +353 59 9721980

Email: - [sales@hispec.net](mailto:sales@hispec.net) or [info@hispec.net](mailto:info@hispec.net)

#### Sales

Contact: - Eoin Keane, Hi-Spec Engineering Ltd. Tel: - +353 87 2562963

Email: - [eoin@hispec.net](mailto:eoin@hispec.net)

#### Machine Servicing

Contact: - Michael Brennan, Hi-Spec Engineering Ltd. Tel: - +353 87 2403312

#### Spare Parts Store

Contact: Mike Nolan or Terence Byrne, Hi-Spec Engineering Ltd.

Tel: - +353 59 9721929 Fax: - +353 59 9721980

Email: - [stores@hispec.net](mailto:stores@hispec.net)

### U.K.

#### Sales

##### Wales & Southern England

Contact: - Edward Lewis, Hi-Spec Engineering Ltd. Tel: - +44 7876 452698

Email: - [elewis@hispec.net](mailto:elewis@hispec.net)

##### Scotland & Northern England

Contact: - Gordon Brodie, Hi-Spec Engineering Ltd. Tel: - +44 7799 905130

Email: - [gordon@hispec.net](mailto:gordon@hispec.net)

#### For spare parts

Contact: - Your local Hi-Spec dealer. If you require a contact name and number you can telephone head office and we would be glad to assist you.

## Notes